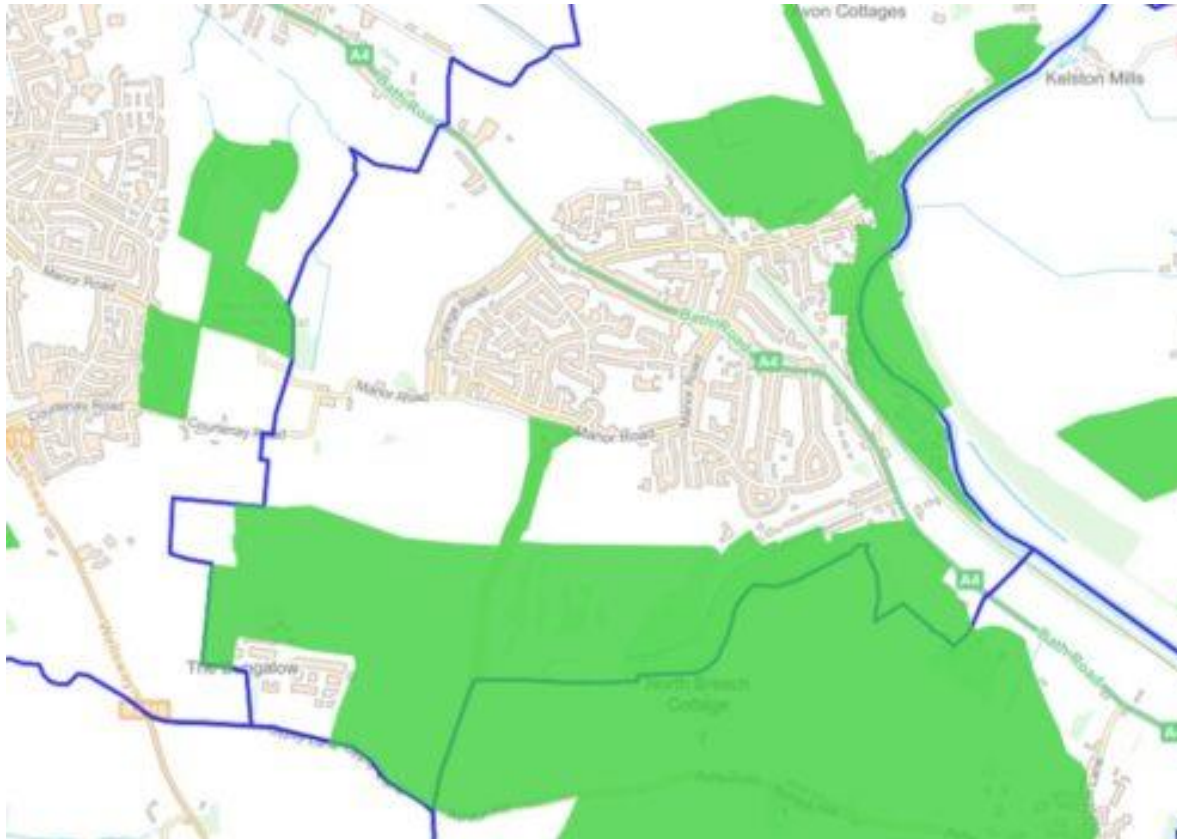
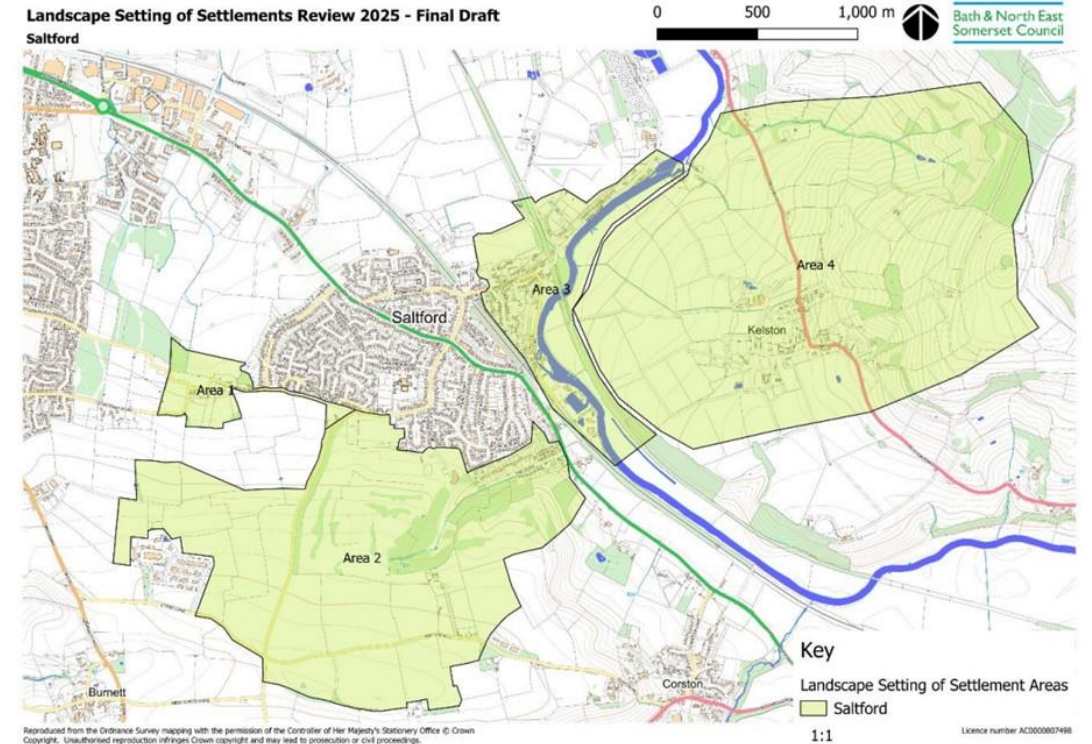


SALTFORD PARISH COUNCIL ACHIEVES LOCAL PLAN 'OPTIONS' PROPOSALS FOR GREATER PROTECTION OF SALTFORD'S GREEN BELT



2024: NE2A 'Setting of Settlements' designation around Saltford (current status, since 2015)



Map 14: Landscape setting of settlements review 2025: Saltford map

2025: NE2A Proposed 'Setting of Settlements' designation around Saltford – following SPC's actions (Section 6.40, p.167-8)