



Stratton Park House, Wanborough Road  
Swindon, SN3 4HG

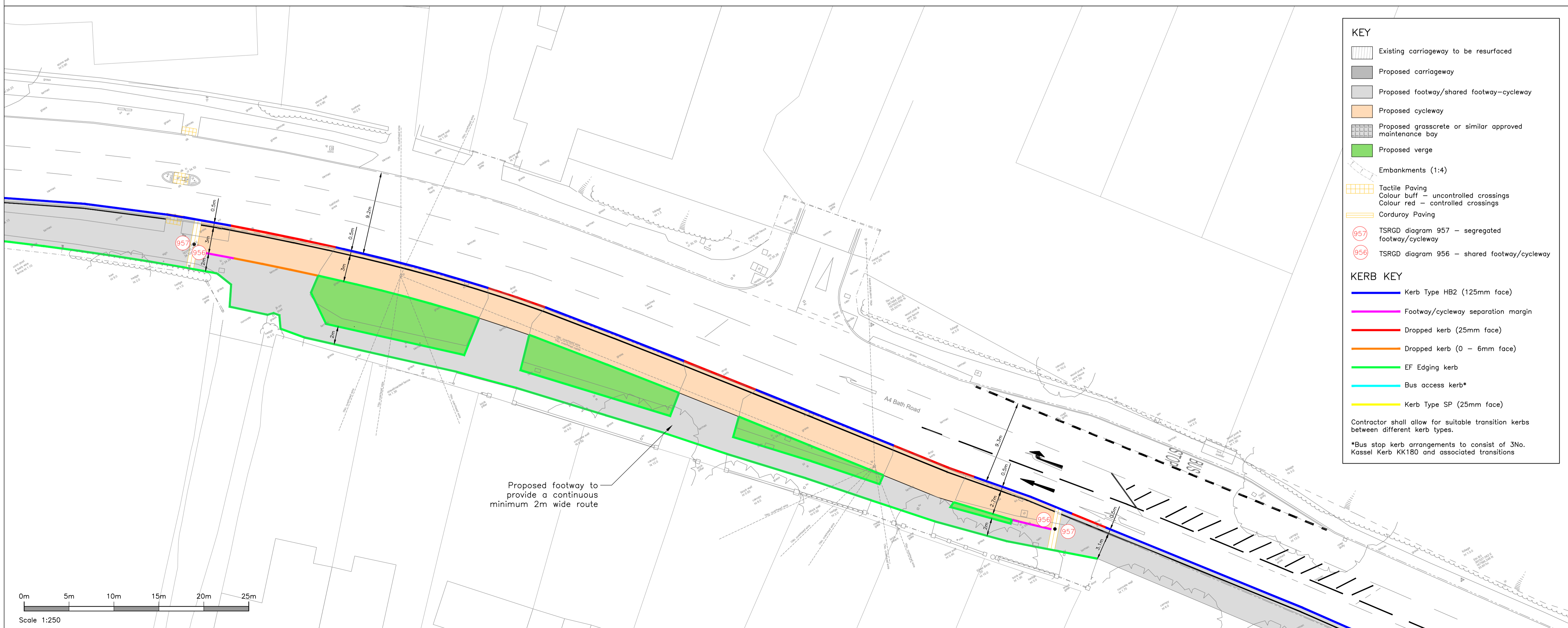
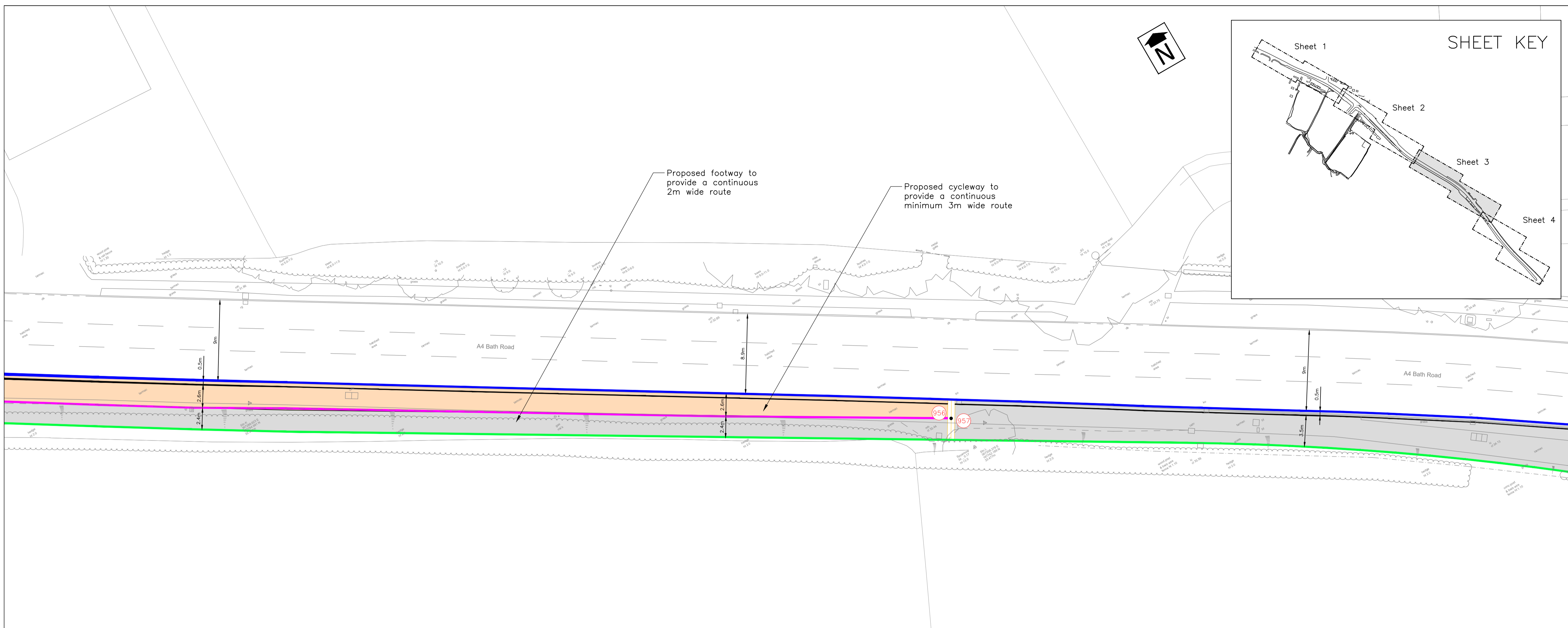
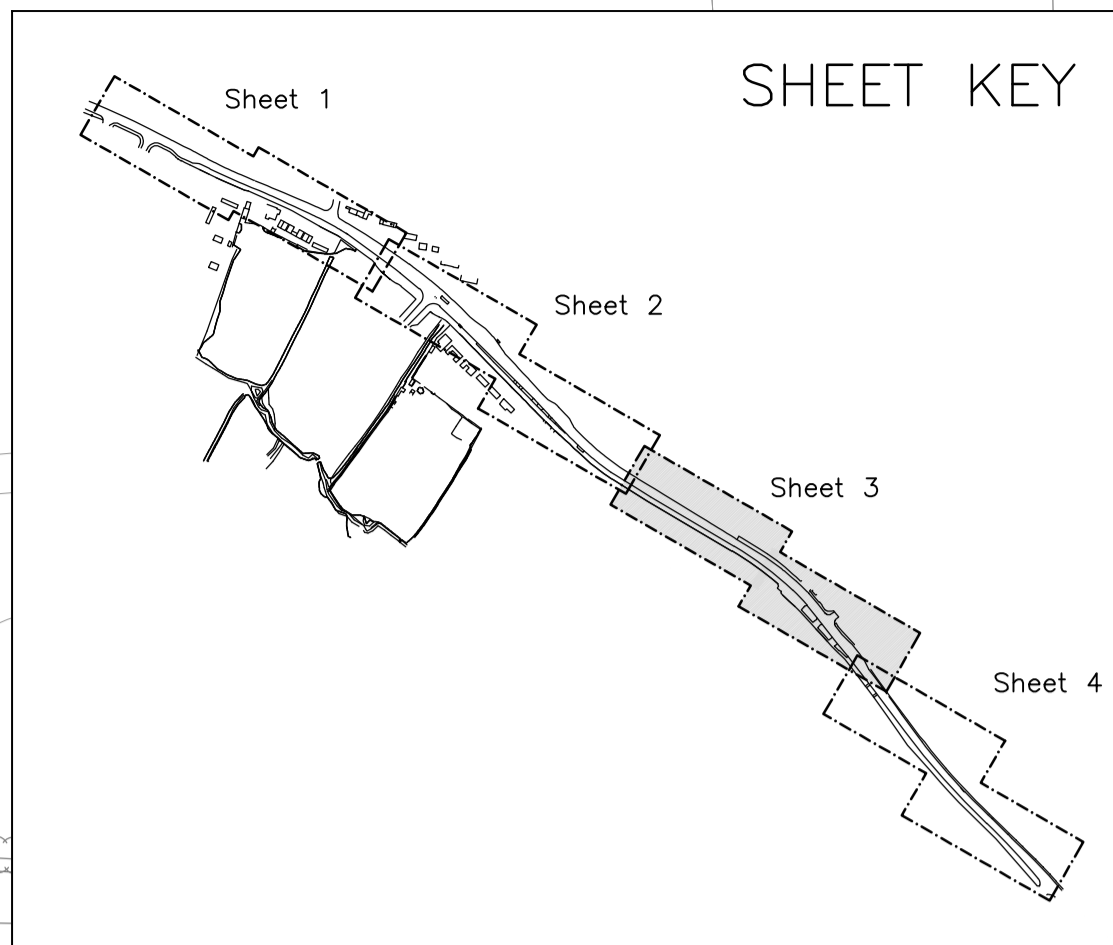
Telephone  
01793 828000

Website  
www.pfapl.com

**For Construction**  
This drawing is produced, together with any related data, to inform the setting out and construction of the works. To be read in conjunction with all working drawings.

**NOTES**

- This drawing is based on the Topographical Survey undertaken by Anthony Brookes Surveys Ltd, drawing no. A125/12799/2 Rev B dated May 2023.
- All adoptable highway works shall be constructed in accordance with the current version of the Specification for Highway Works (SHW), published by the Stationery Office as Volume 1 of the Manual of Contract Documents for Highway Works, and Bath and North East Somerset Council's Streetscape Manual.
- The Contractor shall seek clarification from the Engineer regarding any construction issue arising from this drawing, or any discrepancy between this drawing and any issued drawing or the Specification, prior to construction.
- The works shown on this drawing could affect Statutory Undertaker's apparatus and the Contractor is required to verify the location and depth of all such apparatus prior to commencement of the works and to take any precautions necessary when working in the vicinity of any such apparatus.
- All works within the limit of the highway shall be signed in accordance with the Traffic Signs Manual Chapter 8 Traffic Safety Measures and Signing for Road Works and Temporary Situations 2009, as amended.
- All dimensions shown in metres (m) unless otherwise stated, and all levels relate to Ordnance Datum.



**KEY**

- Existing carriageway to be resurfaced
- Proposed carriageway
- Proposed footway/shared footway-cycleway
- Proposed cycleway
- Proposed grasscrete or similar approved maintenance bay
- Proposed verge
- Embankments (1:4)
- Tactile Paving
- Colour buff - uncontrolled crossings
- Colour red - controlled crossings
- Corduroy Paving
- TSRGD diagram 957 - segregated footway/cycleway
- TSRGD diagram 956 - shared footway/cycleway

**KERB KEY**

- Kerb Type HB2 (125mm face)
- Footway/cycleway separation margin
- Dropped kerb (25mm face)
- Dropped kerb (0 - 6mm face)
- EF Edging kerb
- Bus access kerb\*
- Kerb Type SP (25mm face)

Contractor shall allow for suitable transition kerbs between different kerb types.

\*Bus stop kerb arrangements to consist of 3No. Kassel Kerb KK180 and associated transitions

Rev #	Date	Description	Drawn	Check
16/08/23		First Issue.	HE	CS
A	17/07/24	Kerblines updated, footpath at northern side of access extended and various minor amendments all to accord with BNES comments.	HE	CS
B	08/02/24	Update in accordance with Road Safety Audit designers response.	CS	RML
C	27/11/24	Minor amendments to site layout.	RW	CS
D	05/02/25	Approved for Section 278 Legal Agreement	RW	CS
E	28/04/25	Construction Issue.	RW	CS

Status  
**FOR CONSTRUCTION**



Project  
**Bath Road  
Keynsham**

Drawing Title  
**A4 Bath Road - S278  
General Arrangement  
Sheet 3**

Drawing No  
**C863-01-103** Rev E

Date: August 2023 Scale: 1:250 @ A1  
E-Mail: csumber@pfapl.com

